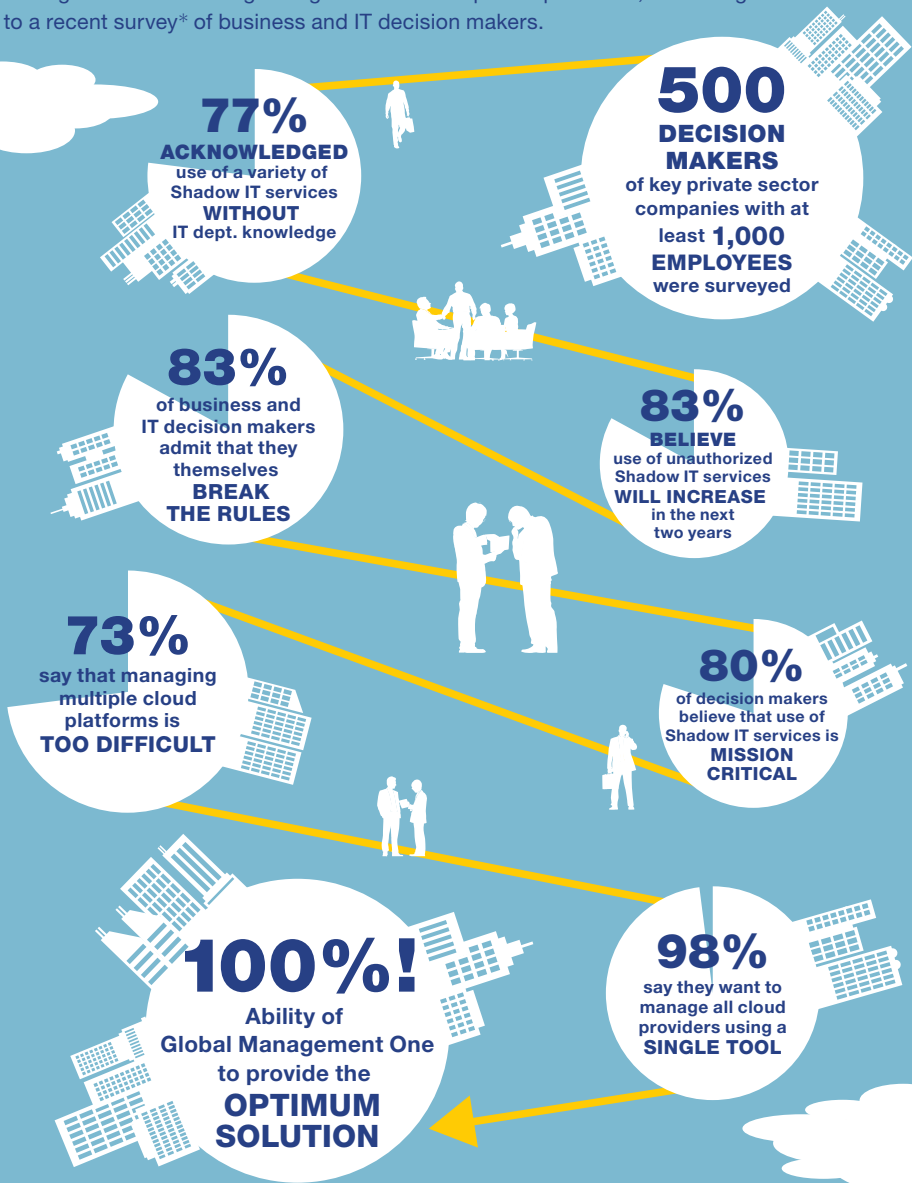


# How to Manage the Risks of Shadow IT

Use of Shadow IT—IT systems within an enterprise not authorized and supported by the IT department, which create serious security and management risks—is a growing trend with complex implications, according to a recent survey\* of business and IT decision makers.



## Global Management One

[www.ntt.com/gmone\\_2](http://www.ntt.com/gmone_2)

A one-stop-shop IT ecosystem of managed services customized for global, regional and local needs that is the practical way to identify and legitimize unauthorized Shadow IT usage and minimize risks. Global Management One places the IT department in complete control of the organization's resources, supported by a single point-of-contact and the know-how of more than 400 engineers worldwide. Global Management One helps to establish best practices and provide cloud-based tools in line with an organization's needs and ensures 100% compliance with company ICT regulations.

\* Source: *The People versus The Ministry of No*, a survey conducted by Vanson Bourne for NTT Communications, June 2016

IN PARTNERSHIP WITH

WSJ.  
CUSTOM  
STUDIOS

Global  
Management **One**

**NTT** Communications

Transform. Transcend.